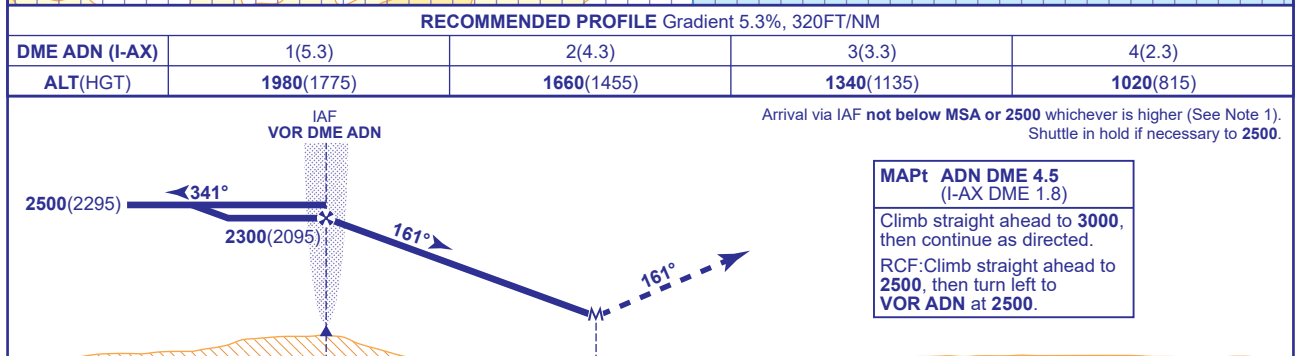


**VOR/DME
RWY 16**
(ACFT CAT A,B,C,D)



<p>ALTERNATIVE PROCEDURE BASE TURN REVERSAL From VOR ADN: fly outbound on R011 (CAT A,B) or R034 (CAT C,D) descending as required to 2500. At ADN DME 3 (I-AX DME 8.8) base turn left to establish on the extended FAT. When established continue as for main procedure.</p> <p>NOTE 1 Subject to ATC approval, aircraft inbound to VOR ADN may descend to 2900 when within 10NM of DME ADN and to 2500 when within 6NM of DME ADN.</p> <p>2 FAT offset 3° from RWY C/L.</p> <p>3 I-AX DME and ADN DME not co-located. Ensure correct range cross check is used for the DME received.</p> <p>4 DME unlocks may occur within 1NM of DME ADN.</p>
--